



Project Number **027023**

**APOSDLE:** Advanced Process Oriented Self-Directed Learning Environment

Integrated Project

IST – Technology enhanced Learning

---

---

# APOSDLE System Installation Manual

---

---

**Author: KC – KNOW-CENTER**

---

<b>1</b>	<b>APOSDLE Platform Installation</b>	<b>1</b>
1.1	Unzip Installation Package	1
1.2	Installing the APOSDLE Platform	1
1.3	APOSDLE Sample Domain Installation	3
<b>2</b>	<b>APOSDLE Platform Configuration</b>	<b>5</b>
2.1	Adding new APOSDLE Users	5
2.2	Starting and Stopping the APOSDLE Platform	5
<b>3</b>	<b>Default Passwords</b>	<b>6</b>
<b>4</b>	<b>Compiling the APOSDLE Platform</b>	<b>7</b>
<b>5</b>	<b>APOSDLE Client Installation</b>	<b>8</b>
5.1	Installation Wizard	8
5.2	Starting the APOSDLE Client	8
<b>6</b>	<b>Compiling the APOSDLE Client</b>	<b>9</b>
<b>7</b>	<b>Additional Information</b>	<b>10</b>
7.1	Modelling a new Domain	10
7.2	APOSDLE System Architecture	10
<b>8</b>	<b>Contact</b>	<b>11</b>
8.1	Technical Questions	11
8.2	General Project Contact	11



# 1 APOSDLE Platform Installation

## 1.1 Unzip Installation Package

After downloading and unzipping the APOSDLE Open Source package you will have the following content on your computer

- APOSDLE Platform and Client Source Code
- Setup Wizards for installing the APOSDLE Platform and Client
- Server Environment (Apache httpd (including Wordpress + Mediawiki), MySQL 5 server, OpenFire server, PHP 5, Apache Tomcat 6, and OpenLDAP server)
- Additional Tools (e.g., PDF printer driver, MySQL GUI tools, etc.)
- Documentation (APOSDLE system architecture and modelling guideline)
- Licensing details

## 1.2 Installing the APOSDLE Platform

The APOSDLE Platform Setup will guide you through the installation process consisting of two parts

- Basic APOSDLE Platform (contains the platform including, drivers, Java JRE, MySQL DB)
- APOSDLE Domains (contains sample domains to run the APOSDLE system out of the box)

The file “**APOSDLE-Platform-Setup.exe**” contains only some parts of the files needed during the installation process. Please make sure all other files and directories from the APOSDLE Open Source package are also available. Additionally, the setup provides a PDF driver for automatically converting MS Office/Open Office documents into PDFs, and the Java JDK 1.6.0-10.

Note: If you do not install the version of Java contained in this package, make sure your JAVA\_HOME environment variable is set. This version of APOSDLE has been extensively tested with Java version 1.6.0-10. It may not work with previous versions of Java.

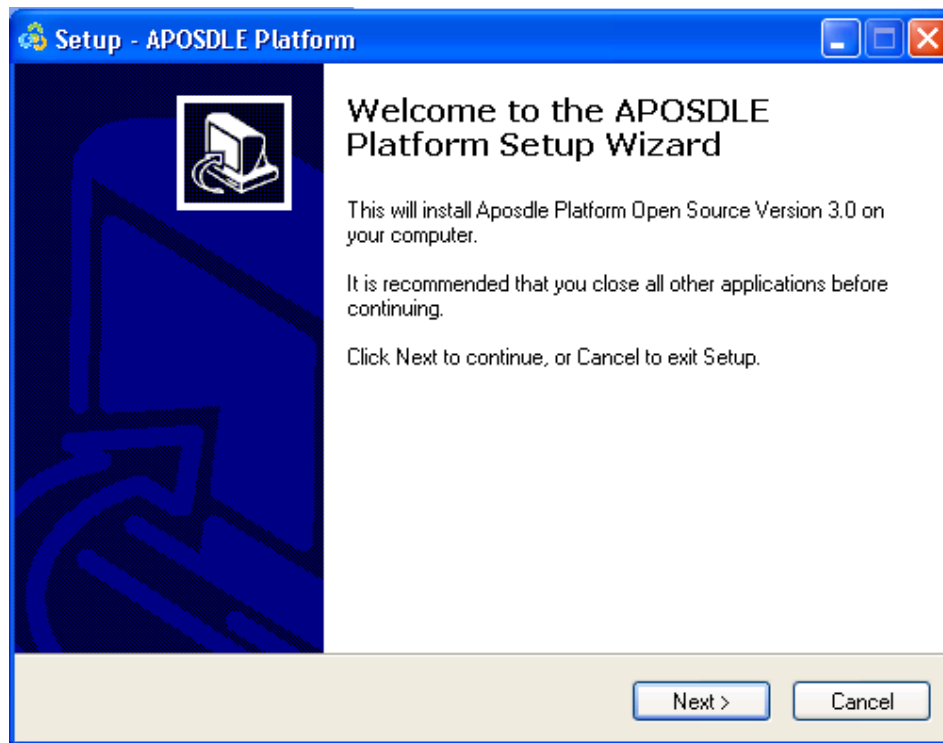


Figure 1: Start screen of APOSDLE Platform Setup (Open Source version)

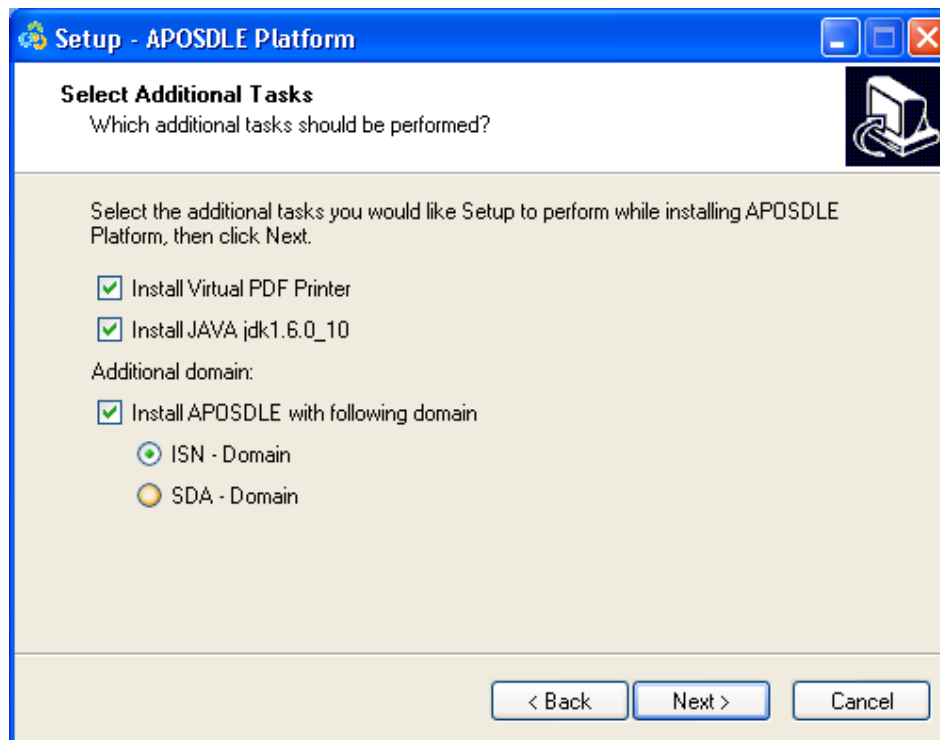


Figure 2: Selection of additional installation steps. The last check box enables/disables the installation of APOSdle sample domains.

### 1.3 APOSdle Sample Domain Installation

The APOSdle Sample Domain package offers two sample domains which have been developed during the project. The domain package will allow you to easily try out the whole APOSdle system without the need to create your own models.

Find here a short introduction of the two domains:

#### Statistical Data Analysis Domain (SDA)

The application domain of Statistical Data Analysis (SDA) focuses on the support of knowledge workers in various disciplines who need assistance in carrying out empirical research at their workplace. The scope of the SDA domain is basic experimental design and statistical analysis. It covers the whole process from the definition of the research question to the written report of the outcome. Examples of skills include the ability to apply basic descriptive and inferential statistics (such as median or correlation), as well as a basic understanding of experimental design (for instance different types of samples and different types of hypotheses).

The SDA domain model is available in English.

#### Innovation Service Network Domain (ISN)

The Innovation Service Network Domain (ISN) was developed specifically for the APOSdle Demonstrator and aims at supporting all knowledge workers in the field of innovation management

and those who always wanted to improve their knowledge in this domain. The tasks described within this application domain reflect an entire innovation management process. Usually a project starts with a requirements analysis and ends with the exploitation of ideas or products. The concepts within this domain give an overview of important methods and techniques used within the field. The documents included are a representative set of lecture notes, project summaries, as well as descriptions and notes. They were collected from the ISN - Innovation Service Network Company, a service and research company in the field of innovation and knowledge management.

The ISN domain model is available in German.

## 2 APOSDLE Platform Configuration

### 2.1 Adding new APOSDLE Users

An easy way to configure the LDAP server that was installed under

*<your install directory>\APOSDLEPlatform\servers\LDAP\OpenLDAP*

1. Start the APOSDLE LDAP service
2. Open a command line window and go to  
*<your install directory>\APOSDLEPlatform\servers\LDAP\OpenLDAP*
3. Run „*import-account.bat sample-accounts.csv*“
4. After that you have created sample accounts which you can use to login  
User Names: bmurray, rhoad, agarfield, sbourne  
Password: same as username

### 2.2 Starting and Stopping the APOSDLE Platform

1. Program Menu
  - a. APOSDLE Platform->START APOSDLE Platform
  - b. APOSDLE Platform->STOP APOSDLE Platform
2. Command line
  - a. *<your install directory>\APOSDLEPlatform\services\0\_STARTUP\_APOSDLE\_Server.bat*
  - b. *<your install directory>\APOSDLEPlatform\services\0\_SHUTDOWN\_APOSDLE\_Server.bat*

Notes:

- 1) If the TOMCAT server does not start try to change the port from 8080 to another value in the configuration file.  
C:\aposdle\APOSDLEPlatform\servers\apache-tomcat-6.0.14\conf\server.xml  
If you change the value of this port you have to change the settings of the client to the same value!!! (<ClientInstallDir>\conf\cci.properties)
- 2) If Apache does not start, check if port 80 is open.



## 3 Default Passwords

- **APOSDLE Admin Account:** admin / Ap0\$d1e
- **Open LDAP:** cn=manager,dc=APOSDLEORG,dc=org **Password:** 12345
- **Openfire:** admin / Ap0\$d1e
- **Tomcat:** admin / Ap0\$d1e
- **MySQL:** root / <no password> (for localhost) and aposdle / aposdle
- **APOSDLE Help (Wordpress)** on <http://server/help>: admin / Ap0\$d1e or author / Ap0\$d1e
- **APOSDLE WIKI (Media Wiki)** on <http://server/wiki>: admin / AP\_OS\_WIKI

## 4 Compiling the APOSDLE Platform

- 1) Make sure the APOSDLE Platform has been stopped (see Section 2.2)
- 2) Compile the APOSDLE Platform with a command line batch script:  

```
<your install directory>\APOSDLE Source  
Code\APOSDLECompileTools\1_mvn_install_server.bat
```
- 3) Copy the compiled APOSDLE Platform to the Tomcat “webapps” directory  

```
<your install directory>\APOSDLE Source Code\APOSDLECompileTools\2_copy-webapp.bat
```
- 4) Start the APOSDLE Server

## 5 APOSDLE Client Installation

### 5.1 Installation Wizard

The APOSDLE Client Setup will guide you through the installation and configuration process.

The file “**APOSDLE-Client-Setup.exe**” contains all files needed during the installation process and requires Java Runtime version 1.6.0-10 or higher to be installed.

At the beginning of the installation process, the setup will ask you to select a default APOSDLE Platform, the APOSDLE Client should connect to. You can either connect to one of the two official APOSDLE Demonstrator Platforms, or you can connect to your own platform by entering an IP address (see Figure 3).

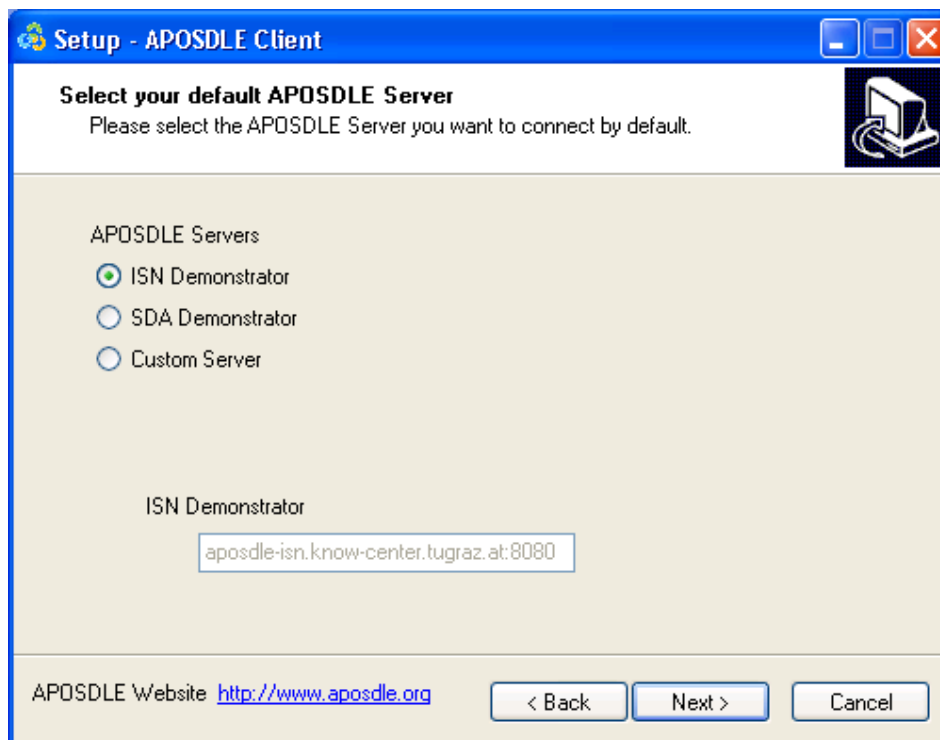


Figure 3: Configuration of the APOSDLE Platform the APOSDLE Client should connect to.

### 5.2 Starting the APOSDLE Client

#### 3. Program Menu

APOSDLE Client -> APOSDLE Default Domain

## 6 Compiling the APOSDLE Client

- 1) Compile the APOSDLE Client with a command line batch script  
`<your install directory>\APOSDLE Source Code\APOSDLECompileTools\1_mvn_install_client.bat`
- 2) The compiled client is available in the directory:  
`<your install directory>\APOSDLE Source Code\modules\client\main\target\`
- 3) set the connection parameters of your APOSDLE Platform in  
`<your install directory>\APOSDLE Source Code\modules\client\main\target\conf\cci.properties`
- 4) Start the APOSDLE Client using a command line batch script:  
`<your install directory>\APOSDLE Source Code\modules\client\main\startAPOSDLE.bat`

## 7 Additional Information

All additional information can be found in the directory “**docs**” of the APOSDLE Open Source Package.

### 7.1 Modelling a new Domain

If you want to create a new domain for your APOSDLE installation, the APOSDLE Open Source Package contains two guidelines:

- **APOSDLE-Modelling-Methodology.pdf** (describes in detail the modelling methodology which have been developed during the project and successfully been applied during the creation of the Application Partners’ models)
- **APOSDLE-Modelling-Technical-Guideline.pdf** (describes all technical details including the installation and use of different modelling tools to create the models)

### 7.2 APOSDLE System Architecture

The software architecture of the APOSDLE system has been documented in **APOSDLE-Software-Architecture.pdf**. The documentation adheres to IEEE 1471-2000 standard and describes different aspects (from logical orchestration of components to development details on class level) of the APOSDLE Platform and APOSDLE Client.

## 8 Contact

### 8.1 Technical Questions

Please contact us for questions or remarks by email under [aposdle-help@list.aposdle.org](mailto:aposdle-help@list.aposdle.org).

### 8.2 General Project Contact

Harald Mayer [harald.mayer@joanneum.at](mailto:harald.mayer@joanneum.at)

Stefanie Lindstaedt [slind@know-center.at](mailto:slind@know-center.at)